

Technical Specifications

		EXH 130	EXH 170	EXH 210
Airflow @ 80Pa	Industry standard (m³/h)	5665	8329	10084
Cooling capacity*	(kW)	8.4	12.7	15.7
Power consumption (total)	Watts max / min	850 / 70	1350 / 70	2145 / 70
	Current max (amp)	3.6	5.8	9.0
Power supply	Voltage / Phases / Hz	230 / 1 / 50	230 / 1 / 50	230 / 1 / 50
Controller	Type	Variable speed inverter	Variable speed inverter	Variable speed inverter
Fan	Type	Centrifugal	Centrifugal	Centrifugal
	Dia x width (mm)	380 x 380	460 x 380	460 x 380
Motor	Type	Direct drive inverter	Direct drive inverter	Direct drive inverter
	Variable speed range (rpm)	240 to 656	170 to 556	170 to 613
	Output Watts max / min	500 / 60	750 / 60	1500 / 60
	Overload & Fuse	Manual reset	Manual reset	Manual reset
	Enclosure	IP 2X	IP 2X	IP 2X
Pump	Type	Centrifugal	Centrifugal	Centrifugal
	Motor	Synchronous	Synchronous	Synchronous
	Rating Watts (input)	25	25	25
	Flow rate (L/min)	21	21	21
	Voltage / Phases / Hz	230 / 50	230 / 50	230 / 50
	Overload	Auto reset	Auto reset	Auto reset
	Enclosure rating	IP X4	IP X4	IP X4
Cooling pad Chillcel	Size (mm)	800 x 436 (H) x 90 (4 pads)	800 x 635 (H) x 90 (4 pads)	800 x 635 (H) x 90 (2 pads) 800 x 635 (H) x 100 (2 pads)
	Pad area (m²)	1.4	2.05	2.05
Water	Tank capacity (L)	11	11	11
	Inlet (mm / inches)	12.7 / ½ male BSP	12.7 / ½ male BSP	12.7 / ½ male BSP
	Drain (mm / inches)	40 / 1½ male BSP	40 / 1½ male BSP	40 / 1½ male BSP
Shipping	Dimensions including pallet (mm)	1160 x 1160 x 775 (H)	1160 x 1160 x 975 (H)	1160 x 1160 x 975 (H)
	Volume (m³)	1.04	1.31	1.31
	Mass (kg)	71	77	78
	Operating (kg)	78	84	85
	Connecting duct (raw edged)	Length x width (mm)	550 x 550	550 x 550

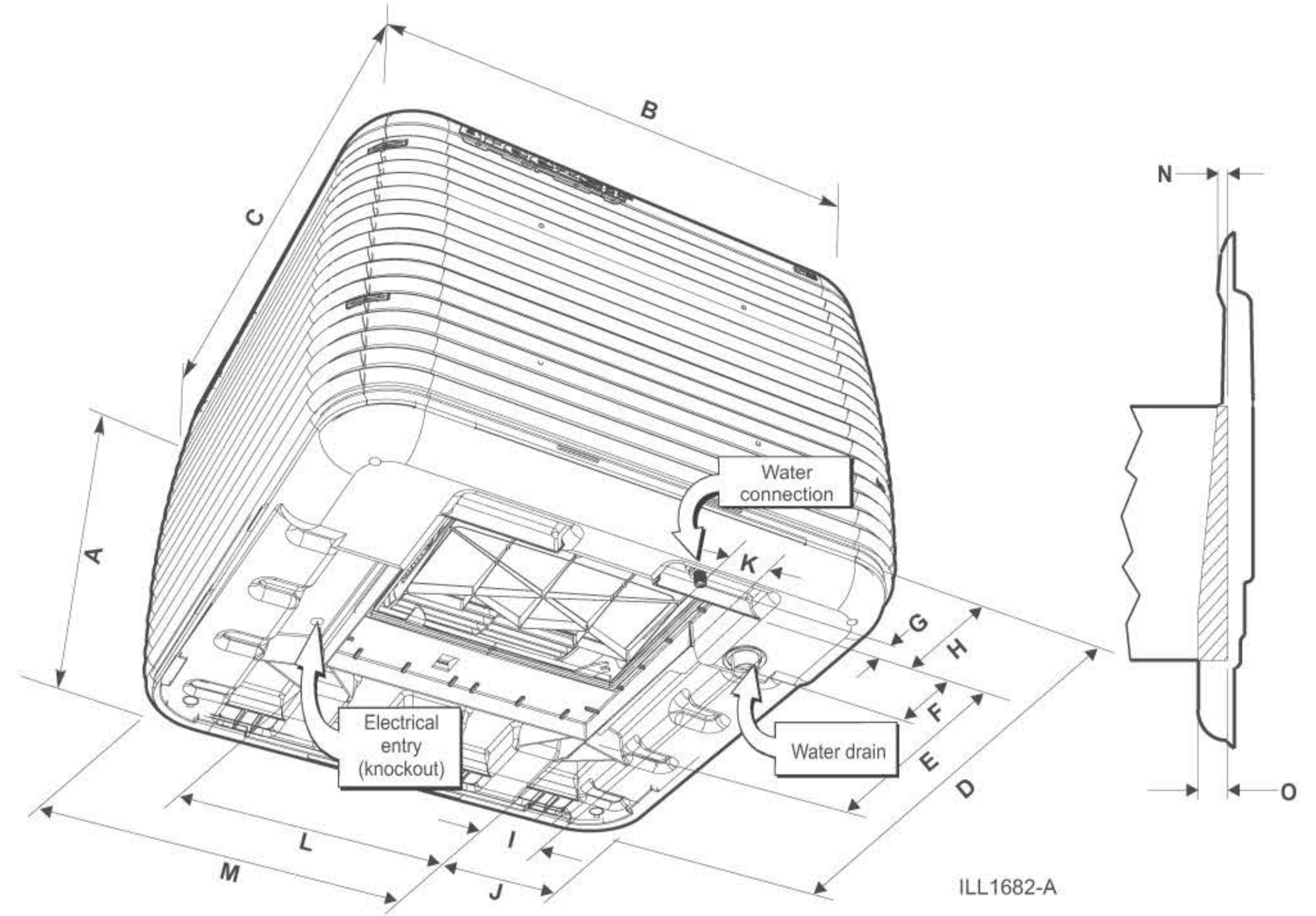
*Cooling capacity measured to Australian Standard AS2913-2000, ambient of 38°C dry bulb & 21°C wet bulb, with room exit temperature of 27.4°C.

Cooler Discharge Air Temperature Chart

		Ambient Relative Humidity %								
		10	20	30	40	50	60	70	80	90
Ambient Dry Bulb Temperature °C	10	2.6	3.5	4.4	5.3	6.1	6.9	7.7	8.5	9.3
	15	5.9	7.1	8.2	9.3	10.4	11.4	12.3	13.2	14.1
	20	9.2	10.6	12.0	13.3	14.6	15.8	16.9	18.0	19.0
	25	12.3	14.1	15.8	17.3	18.8	20.2	21.5	22.7	23.9
	30	15.4	17.5	19.5	21.3	23.0	24.6	26.1	27.5	28.8
	35	18.4	20.9	23.3	25.4	27.3	29.1	30.7	32.2	33.7
	40	21.3	24.3	27.0	29.4	31.6	33.5	35.3	N/A	N/A
	45	24.3	27.8	30.8	33.5	35.9	38.0	N/A	N/A	N/A
	50	27.2	31.2	34.6	37.6	N/A	N/A	N/A	N/A	N/A
	55	30.1	34.7	38.5	N/A	N/A	N/A	N/A	N/A	N/A

This chart represents approximate air temperatures based on 87% saturation efficiency at sea level. From tests carried out to Australian Standard 2913.

CABINET DETAILS



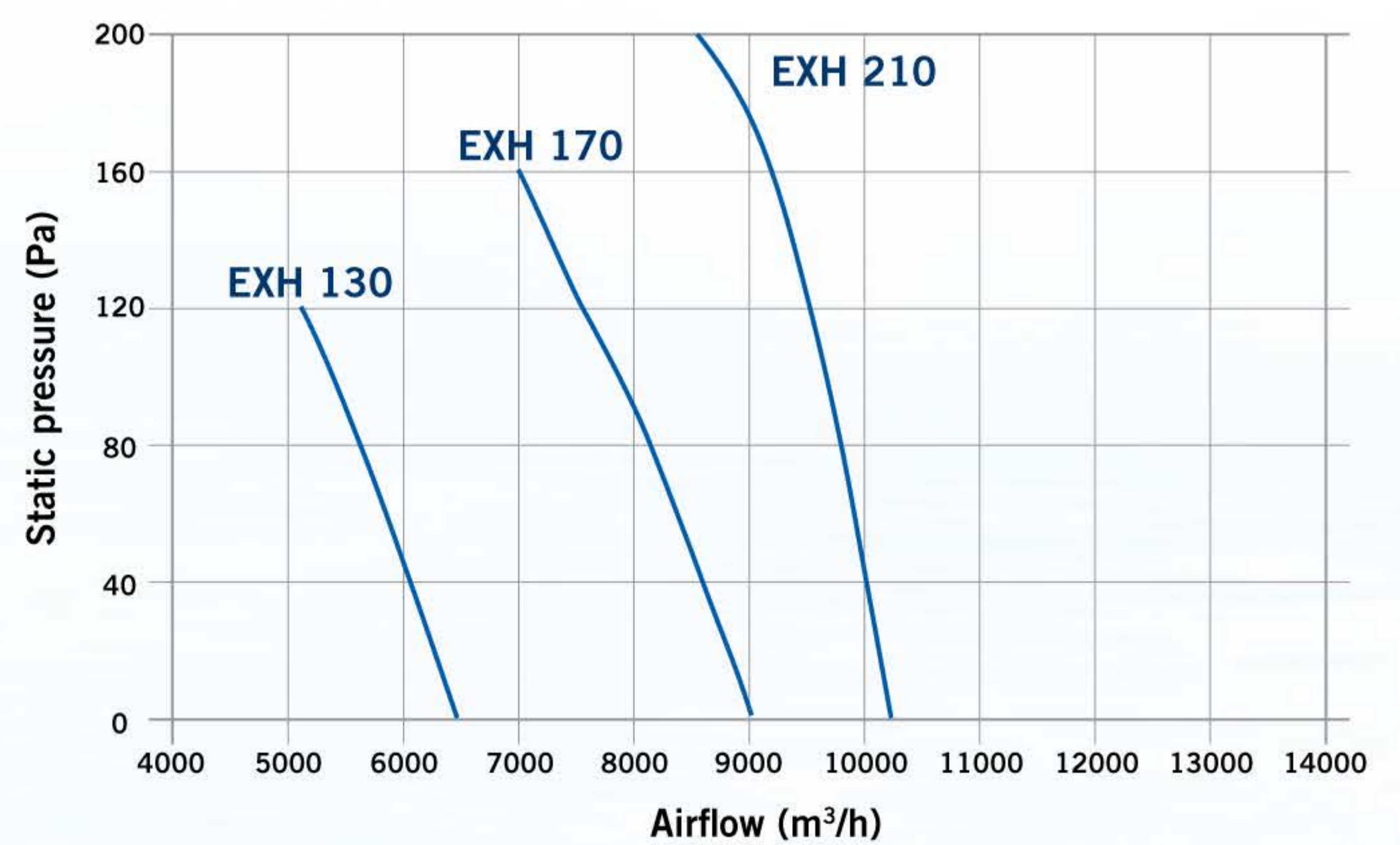
Model#	A	B	C	D	E*	F	G	H	I	J	K	L*	M	N	O
EXH 130	660	1160	1160	1108	555	109	38	182	81	274	118	555	834	38	84
EXH 170	860	1160	1160	1108	555	109	38	182	81	274	118	555	834	38	84
EXH 210	860	1160	1160	1108	555	109	38	182	81	274	118	555	834	38	84

Note: All dimensions are in mm. *Dropper dimensions.

Colour range



FAN CURVES



Model#	Industry STD Rating m³/h @ 80Pa	Motor W	Certified Air Delivery (m³/h) (static pressure Pa)					
			0	40	80	120	160	200
EXH 130	5665	500	6566	6137	5665	5135	-	-
EXH 170	8329	750	9262	8768	8329	7708	7151	8765
EXH 210	10084	1500	10547	10316	10084	9797	9443	8765